

EM-I61J

USER MANUAL

Foreword

Thank you for using our products! To help you get familiar with the product quickly, please refer to the user manual if you have any problems during use. This document mainly introduces the interface and system usage instructions of the EM-I61J rugged handheld and helps you quickly understand the use of the product through the picture instruction. If you have any insoluble problems during use, please contact our technical personnel to deal with them. Thank you for your trust.

NOTE

The information in this manual is subject to change without notice.

Table of Contents

ONE .File Version	1
File Version	1
TWO .Product Appearance	2
Six Views.....	2
Device Internal Interface Diagram.....	3
THREE .System Initialization Settings	4
System Initialization Settings	4
FOUR .Accessories	11
Accessories	11
FIVE .Special Module Description	12
Removal of Battery Cover	12
Waterproof Status	12
Power Button Shutdown Procedure	13
Custom Key Instructions.....	13
SIX .FAQ	17
FAQ	17

ONE. File Version

File Name	EM-I61J Win10 System User Manual				
No.	0001	Version	V1.0		
Issuing Date	12/8/2023	Pages			
Revision Record					
No.	Revision Code	Version	Date	Content	Department
1	YDXX-01	V1.0	2023-12-8	First issue	Technical department 1

TWO.Product Appearance

1.Six views

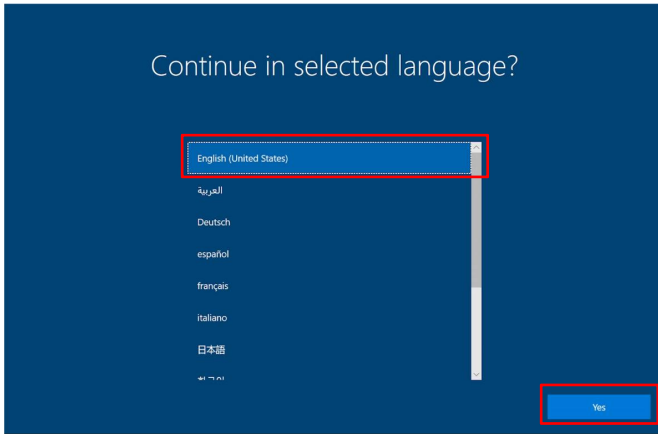


2. Device internal interface diagram

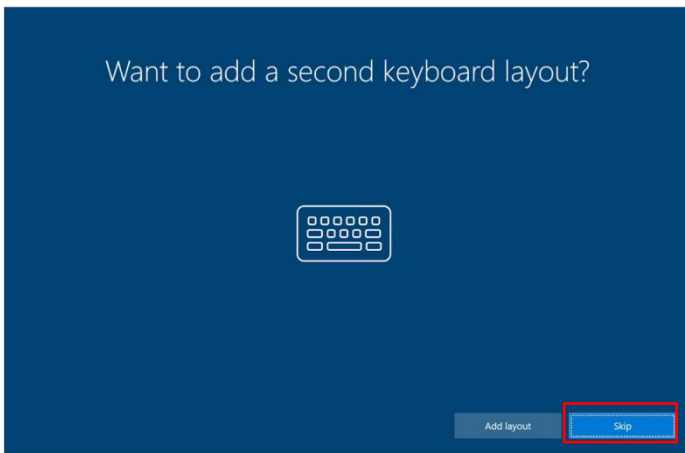


THREE.System Initialization Settings

1.Take Windows 10 as an example, select the required language and click “Yes” .

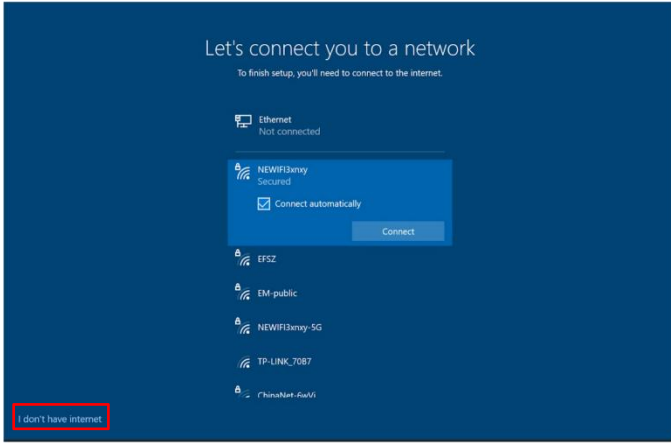


2.Choose whether to add a second kind of keyboard according to the demand, the default is skipped.

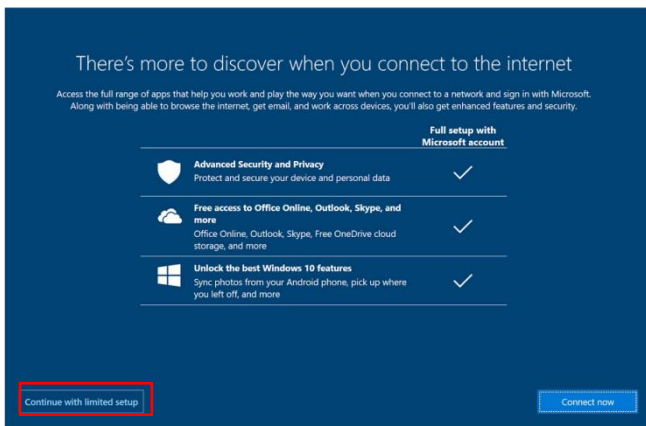


3. Click “I don’t have Internet” .

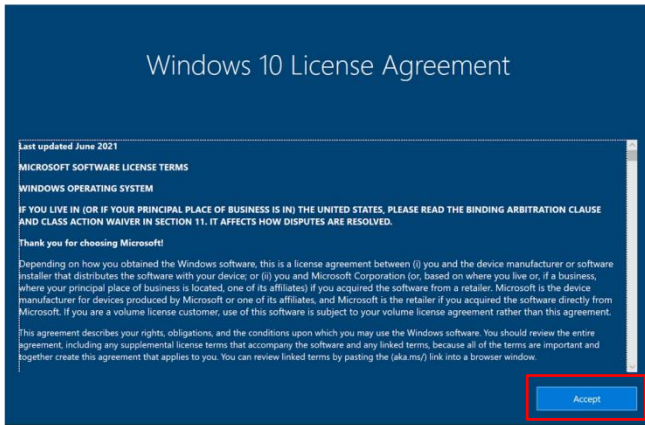
Note: Do not to connect to the network, otherwise you need to log in to the Microsoft account to enter the system, or the unblocking fails.



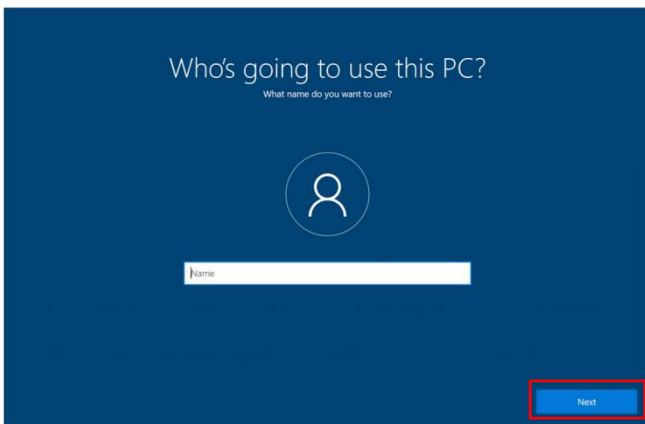
4. Click “Continue with limited setup” (the device will generally restart at this time, and continue to unseal from step 3 after restart).



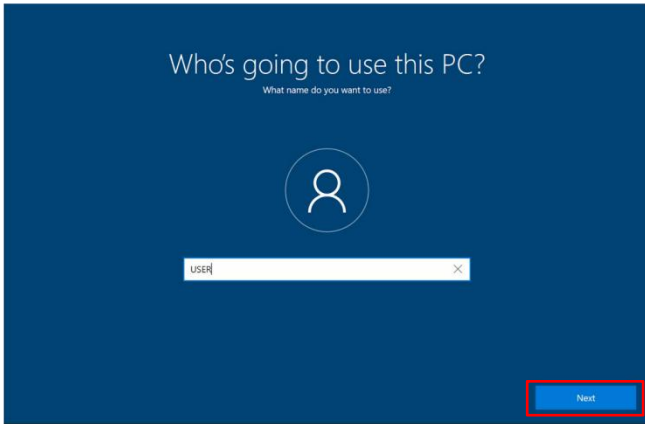
5. Click “Accept” .



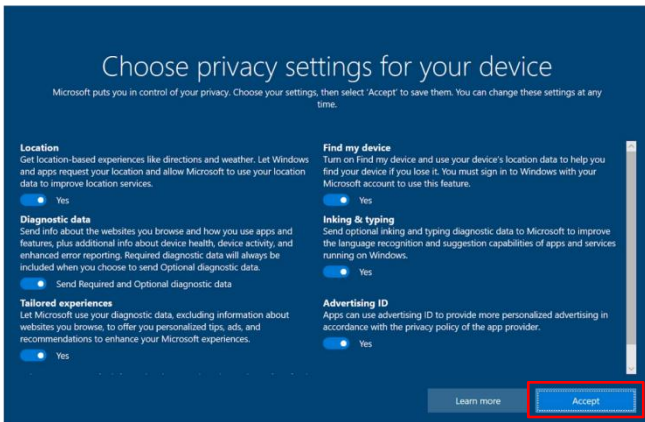
6. Enter the device user name, which is customizable.
Then Click “Next” .



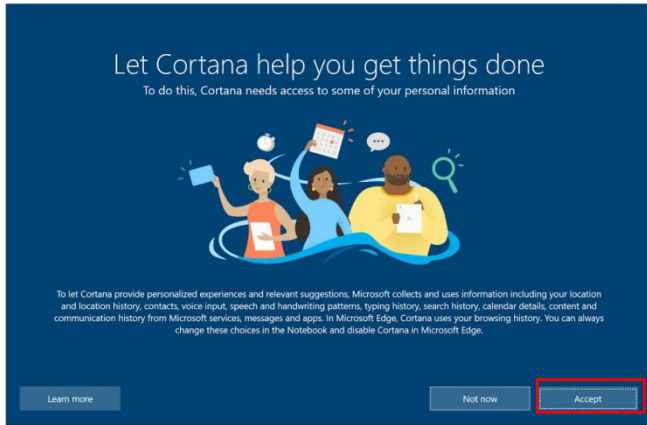
7. Enter password (You can skip setting a password and proceed directly by clicking "Next").



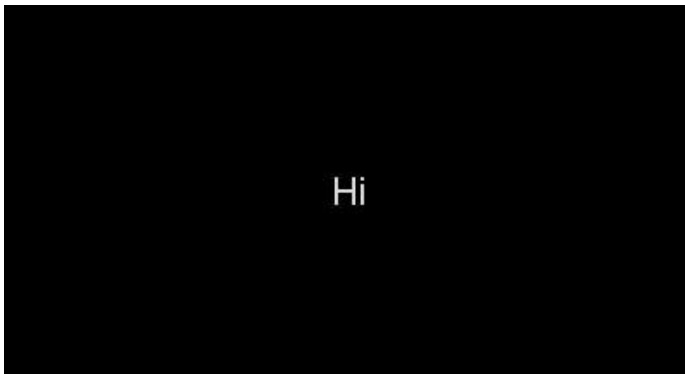
8. Click "Accept" .



9. Click “Accept” .



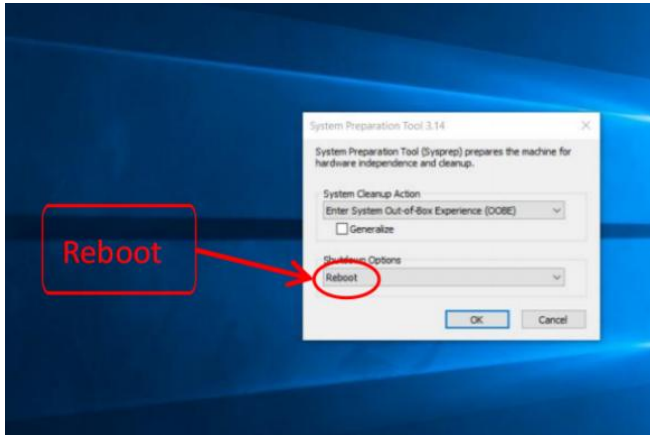
10. At this point, after unlocking, you will begin to enter the system interface.



Note:

If there is a language setting error during the unlocking process and you cannot return to the previous step to make changes, or if you have already connected to the network, resulting in a failed unlocking process.

Please connect an external keyboard and simultaneously press “Ctrl + Shift + F3” to enter engineering mode. Click on the connected WiFi network, right-click to select "Forget." Then, choose the "Reboot" option, and click “OK” to restart the device. You can then proceed to unlock the device again.



FOUR.Accessories

Docking Charger (Optional)



Hand Strap (Optional)



Removable Battery



3-In-1 Adapter



FIVE.Special Module Description

1.Removal of Battery Cover



Move the battery cover latch to the left to lock the battery in place, and to the right to unlock the battery.

After removing the battery cover, release the internal battery latch to remove the battery, as shown in the diagram above.

2.Waterproof Status

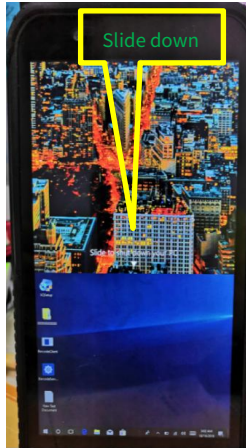
a) Please ensure the battery is installed securely and locked in place, while all the latches on the battery cover must be moved to the locked position.

b) The protective caps for the USB & Type C ports must not be open. Please make sure the caps are closed as shown in the image below.



3.Power Button Shutdown Procedure

Press and hold the power button for approximately 5 seconds until "slide to shut down your PC" appears. Then, slide down from the triangle symbol on the screen, and the device will shut down automatically.

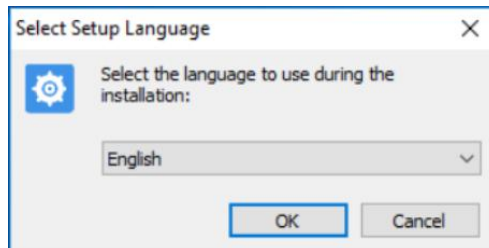


4.Custom Key Instructions

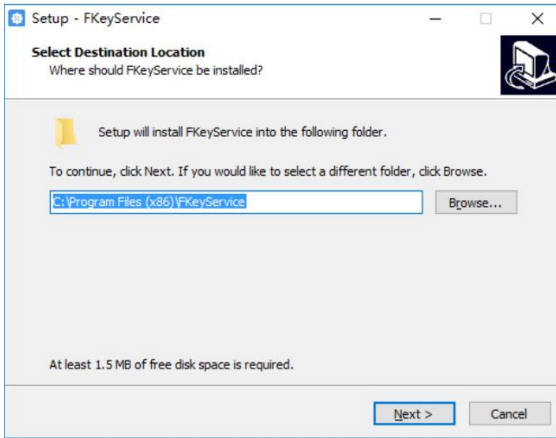
"F" function key can be customized as a one-touch startup button. For instance, pressing the "F" key can quickly launch an application software. Note: Devices equipped with a barcode scanning module typically use the "F" key to initiate barcode scanning.

Double-click on the "FKeyService.exe" file located in the "RuggedPad61J" folder under the "Setup" directory to install.

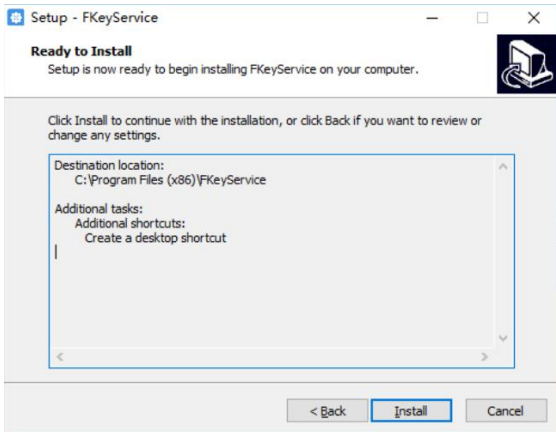
Installation interface



Select the default path and click "Next".



Click "Install" .

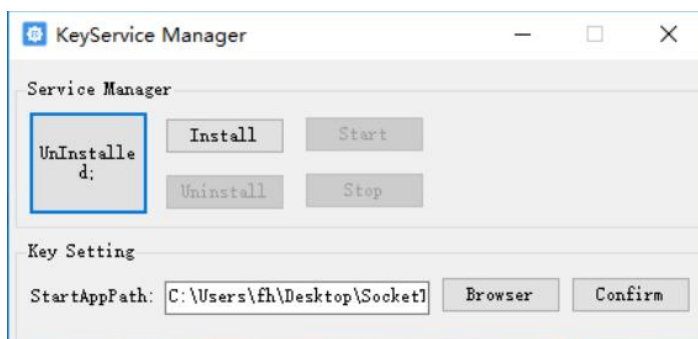


Click “Finish” .

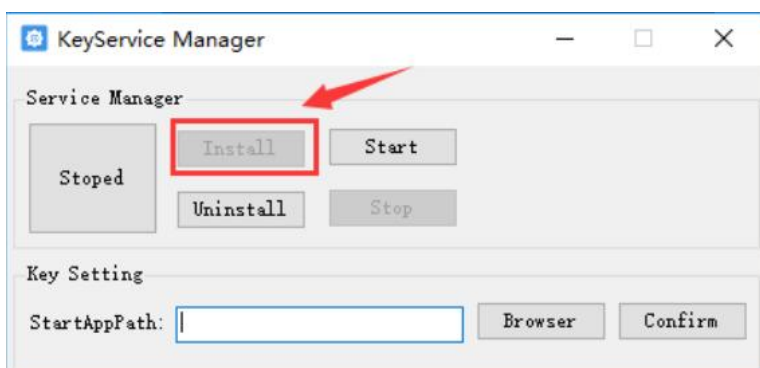


Configure the path for the application software (APP).

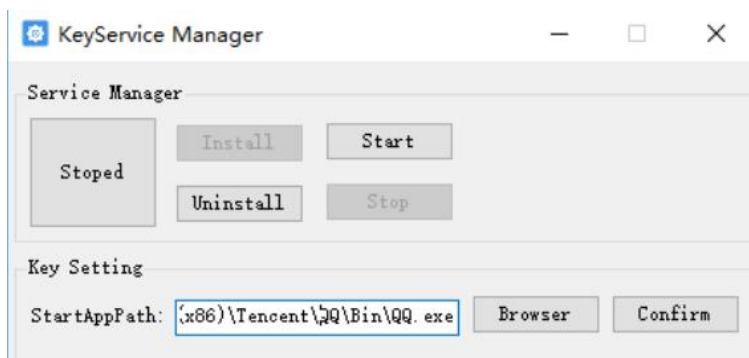
Double-click on the desktop icon "FKeyService" to open the app.



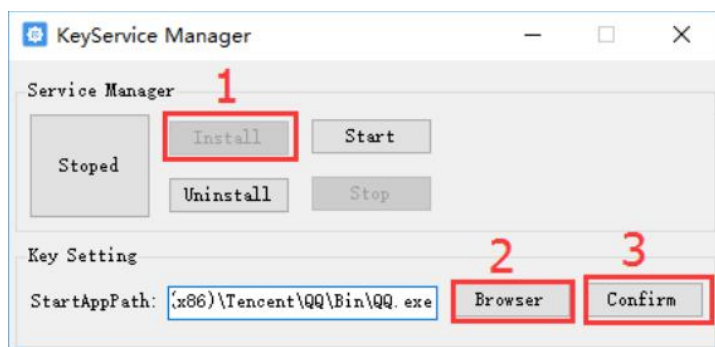
To install the service for monitoring the "F" function key, simply click on "Install".



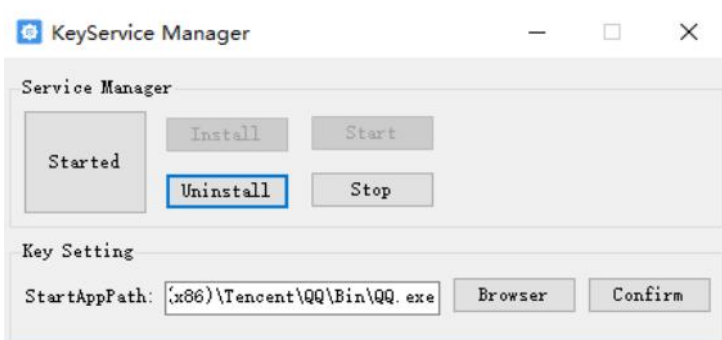
Browse to the .exe program or shortcut link file that needs to be invoked by the "F" key. Click on the "Browser" button to begin browsing.



Click "Confirm" to confirm the setting of StartAppPath.



Start the monitoring service for the "F" function key by clicking the "Start" button.



SIX. Frequently Asked Questions

a) SIM card not recognized.

Check the orientation of the SIM card to ensure it matches the icon, then lock the latch securely.

b) SD card not recognized.

Ensure the SD card is functioning properly, installed with the correct orientation matching the icon, and lock the latch securely.

c) USB and Type C ports not recognized.

Check for any wear or damage to the USB ports. If not recognized, try connecting to the network and attempting again.

d) Device won't power on.

The battery may be depleted. Connect the charger and charge for at least half an hour before attempting to power on. It's advisable to charge the device when the remaining battery level is at 20% or lower.

e) Unable to access Windows system.

If the device fails to boot properly, displaying a black screen, blue screen, or command line interface, please contact our technical support department to provide the original system files for system reinstallation. If system recovery fails, it may indicate a hardware malfunction. Please contact us for after-sales hardware repair services.